

WINTRISS®



SmartPAC PRO

Complete centralized control for all of your press automation.

Wintriss SmartPAC PRO includes all features of the original SmartPAC series of controls, along with these exciting new additions:

Tool Manager

The SmartPAC PRO has virtually unlimited tool setup storage, a searchable Tool Manager to organize the setups, and a Tool Summary display that enables the user to view the entire contents of each setup in a single formatted screen.

Custom Home Screen Dashboards

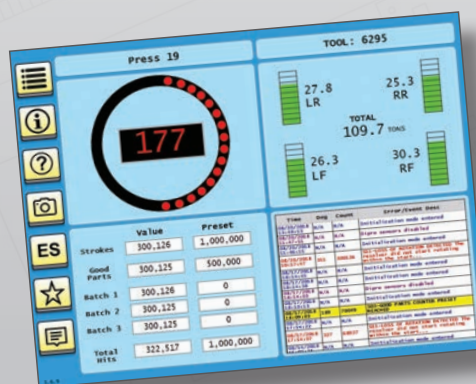
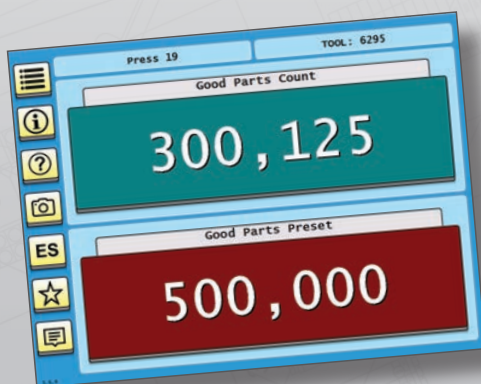
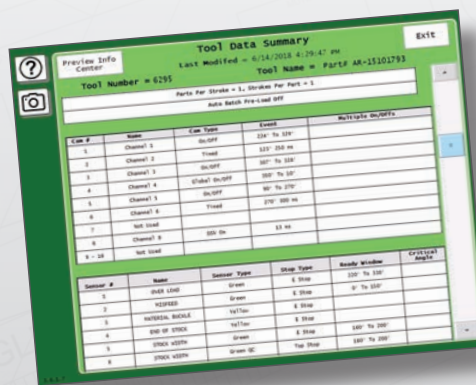
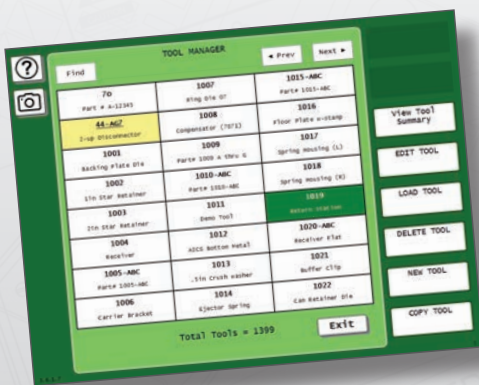
Users can create custom home screen dashboards to display the information they use most often. These dashboards can be named and saved in the favorites menu and quickly recalled any time.

Wonderware Option

The SmartPAC PRO Wonderware option enables the SmartPAC PRO to run HMIs that were created in the Wonderware development environment (not included). The main purpose of this feature is to allow the SmartPAC PRO to act as the user interface for ancillary equipment, thus eliminating the need to put additional screens on the press.

USB Port

With SmartPAC PRO's external USB port, you can use a barcode scanner for job selection and operator login, or download memory backups, screen shots, and system information to a USB disk.



Network Features
SmartPAC PRO
the world's first

Servo Feed Interface

Set and load all feed parameters from the SmartPAC screen

Custom Controls
Integrated systems built to your specifications

WPC 2000

Meets or exceeds all current standards for clutch/brake control

DiProPAC

Up to 32 sensor inputs for die monitoring

ProCamPAC

Up to 16 channels of precise timing control

AutoSetPAC

Tonnage monitor keeps press and die loading in check

WaveFormPAC

Advanced load monitor lets you see the whole picture

RampPAC

Automate shutoff, counterbalance, and cushion control

PM Monitor

Up to 64 maintenance parameters monitored the right way

ShopFloorComm

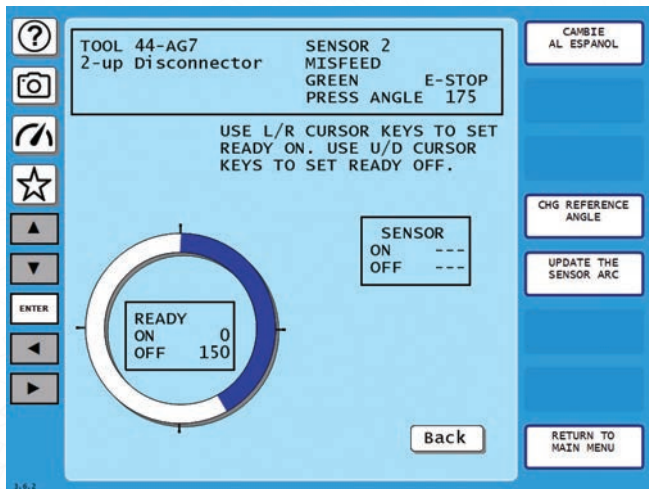
Shop floor data collection for productivity improvements

SmartPAC PRO

SmartPAC PRO Modules

Any or all of these modules can be added to the SmartPAC PRO to expand its role in your press automation. These features have been developed using customer feedback. You can select the ones that make sense and have benefit to your applications. More details on each can be found in this brochure.

Wintriss SmartPAC PRO - The Best Just Got Better



DiPro[®]PAC

Protect Your Investment with Die Protection

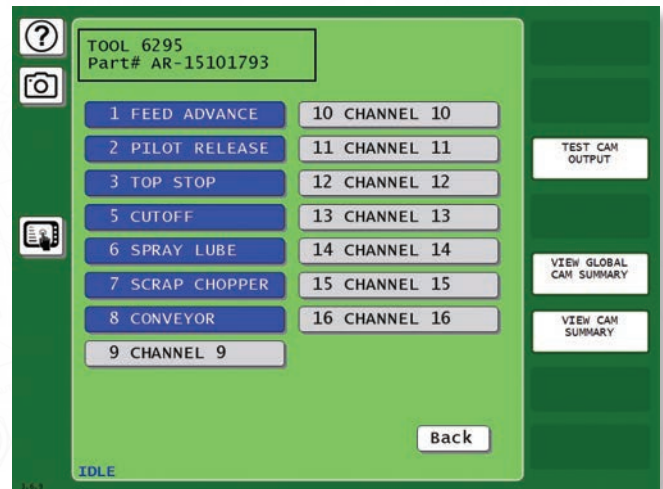
SmartPAC PRO continues Wintriss's leadership in Die Protection technology. The DiProPAC prevents costly die repairs and press downtime by using up to 32 sensors to detect problems such as misfeeds and non-ejected parts. When a malfunction is detected, SmartPAC PRO stops the press before damage occurs.

Advanced built-in monitoring logic provides you with unparalleled flexibility

In addition to monitoring common events such as part ejection, misfeed, and material buckle, the SmartPAC PRO has built-in monitoring logic to allow you to detect material pull-back, transfer problems, cylinder/cam return, and part-in-place sensors. The DiProPAC has the unique ability to monitor intermittent events such as slug ejection, gagging operations, zig zag feeds, and multi-feed operations. Because SmartPAC PRO uses individual timing signals for each sensor, it can signal the press to stop at the earliest possible time.

Complete Die Protection Solution

Without sensors and a way to connect them, the system is incomplete. Wintriss offers sensors, wiring accessories, and interfaces (such as the DSI 2 on the right). For more details, see the Die Protection Handbook, or sign up for a Wintriss Die Protection Clinic at www.wintriss.com



ProCam[®]PAC

Improve Productivity with Programmable Cam Outputs

Set accurate and repeatable timing for up to 16 cam channels to control items such as feeders, lubricators, and air blow-off.

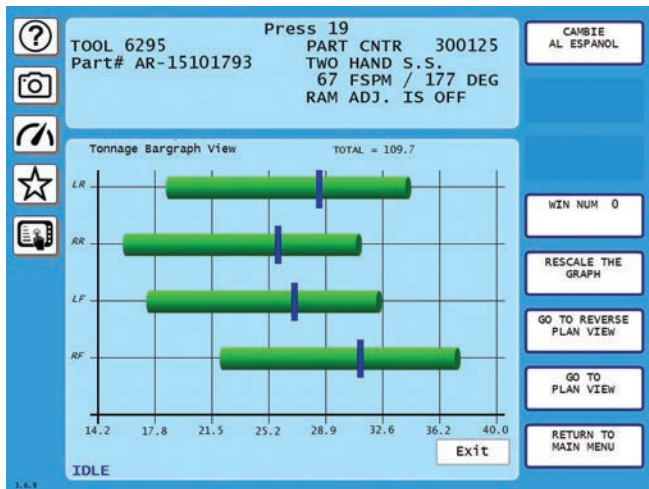
The SmartPAC PRO ProCamPAC is the most advanced PLS in the world. In addition to simple ON/OFF and timed outputs, the ProCamPAC features outputs that will automatically advance/retard timing as the press speed changes, and outputs that turn on when the press starts and off when it stops (for conveyors).

New functionality includes outputs that actuate only on specified cycles (to control gagging), asymmetrical toggle outputs (for parts diverters), and outputs that can be triggered by external automation or sensor faults.

Press-related functions like hydraulic overload reset and top stop can be set once as Global Cams and you will never have to program them again.



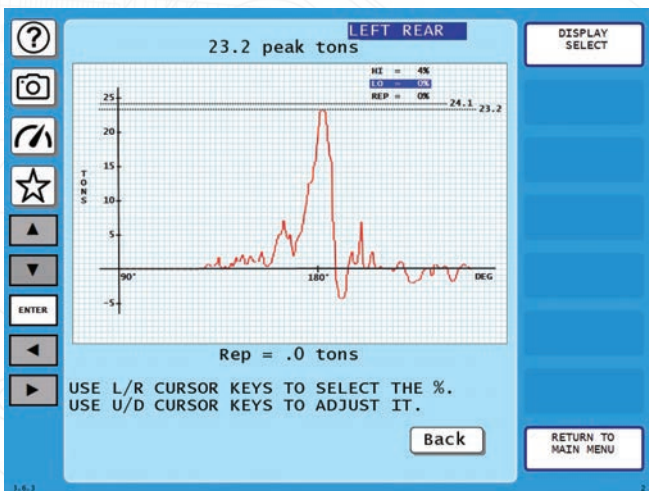
Wintriss SmartPAC PRO - The Best Just Got Better



AutoSet[®]PAC

Improve Process Control and Detect Tonnage Variations

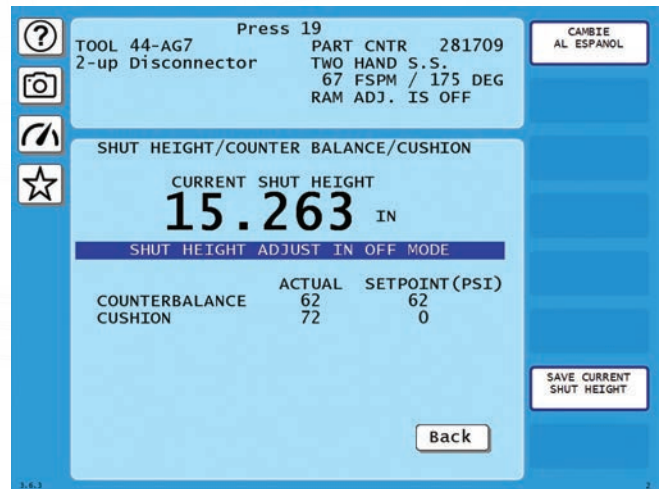
The AutoSetPAC tonnage monitor protects your press and dies with high, low, repeatability, and reverse (snap-through load) setpoints that are stored with the tool setups. AutoSetPAC's tonnage history feature will show you the highest tonnage, the average tonnage, and the currently running tonnage.



WaveFormPAC[™]

See the Whole Picture!

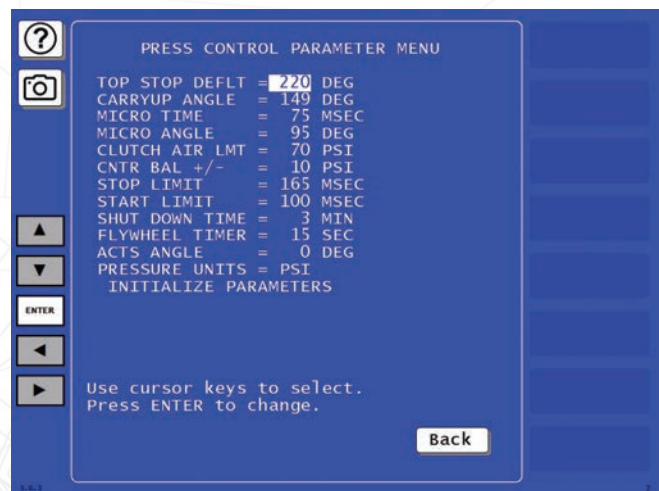
The WaveFormPAC advanced tonnage signature monitor adds even more load-monitoring capability to SmartPAC PRO. In addition to traditional peak forward and reverse load monitoring, the WaveFormPAC displays tonnage waveforms and setpoint limits for up to four monitoring windows. WaveFormPAC stores benchmark waveforms for every die, enabling you to verify setups and quickly identify problems.



RamPAC[®]

Automate Setup of Shut Height, Counterbalance Pressure and Die-Cushion Pressure

By automatically setting the shut height, counterbalance, and cushion pressures when you change tools, SmartPAC PRO's RamPAC module can dramatically reduce setup time, improve press stopping performance, increase clutch life, and reduce energy consumption.

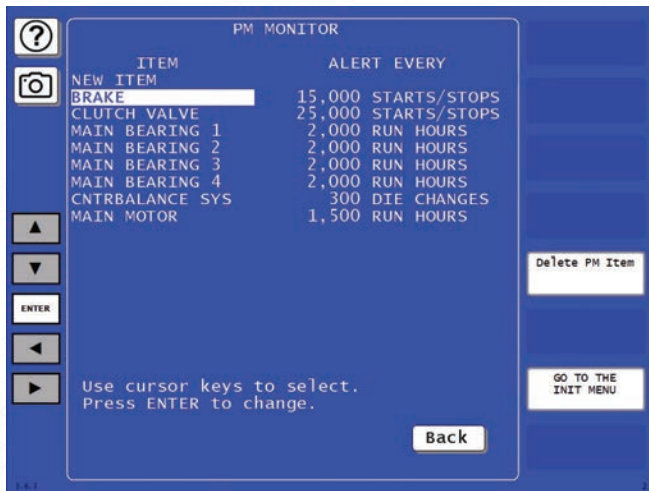


WPC

Wintriss Clutch/Brake Control Integrated, Powerful Press Control Package

SmartPAC PRO can be integrated with the Wintriss Clutch/Brake Control (WPC 2000), a powerful, dual-microprocessor-based press control system that meets or exceeds all current regulations for control reliability.

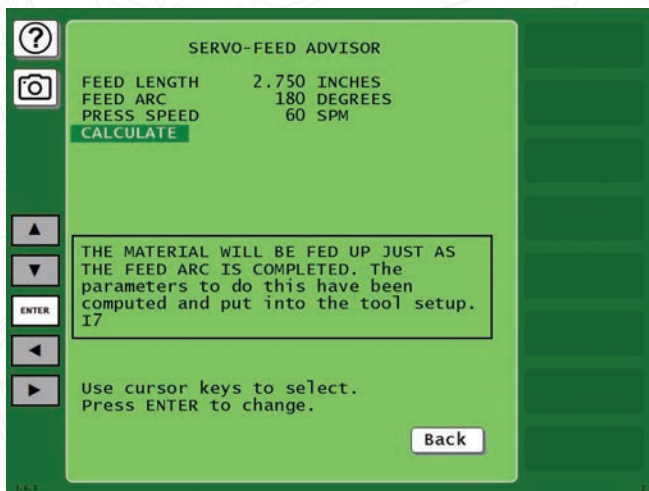
Wintriss SmartPAC PRO - The Best Just Got Better



PM Monitor

Preventive Maintenance Monitor

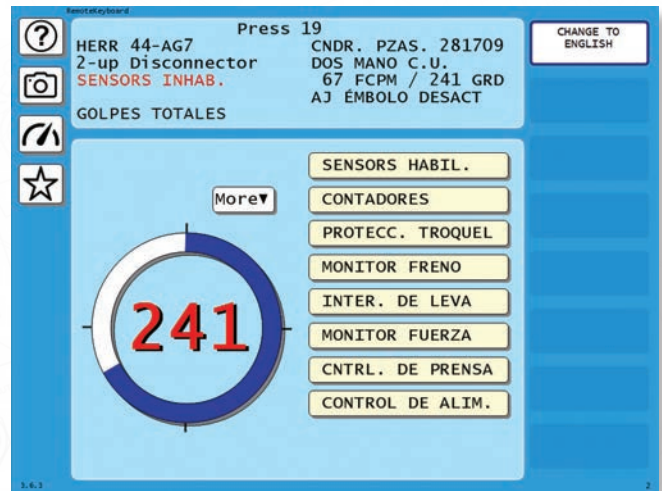
SmartPAC PRO's Preventive Maintenance (PM) Monitor tracks up to 64 items on the press. You can schedule maintenance based on time, strokes, machine starts and stops, die changes, and other parameters.



SFI: Servo Feed Interface

Communicate with Many Brands of Servo Feeds

With SmartPAC PRO's Servo Feed Interface (SFI) option, you can program, store and automatically download feed parameters for each tool. For select servo feeds, our Feed Advisor can check your programmed settings to ensure that they're within the feeder's capabilities.



Multilingual

Chinese, Portuguese, Spanish, Polish and German language versions of the SmartPAC PRO are available.



ShopFloorConnect®

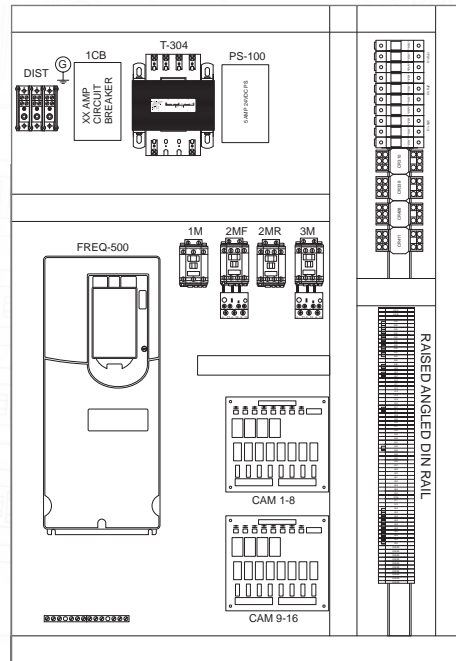
Real Time OEE and Production Tracking Software

With the addition of ShopFloorConnect, The SmartPAC PRO becomes a real-time data collection device which enables ShopFloorConnect to automatically collect and store production counts, downtime, and other data from the press. ShopFloorConnect displays machine status in real time and stores production data for historical analysis and reporting. The capabilities of ShopFloorConnect are not limited to your SmartPAC PRO-equipped presses, as it can collect data from any machine in your factory. By assigning downtime reasons to each stoppage, it uncovers your hidden sources of downtime, making ShopFloorConnect a true continuous improvement product.

For more details, visit www.ShopFloorConnect.com.

Wintriss Integrated Solutions

Custom Solutions: Wintriss can custom build press-control consoles or panels tailored to your needs, including variable speed drives, soft start, servofeed controls, lubrication monitor and control, and PLCs for automation.

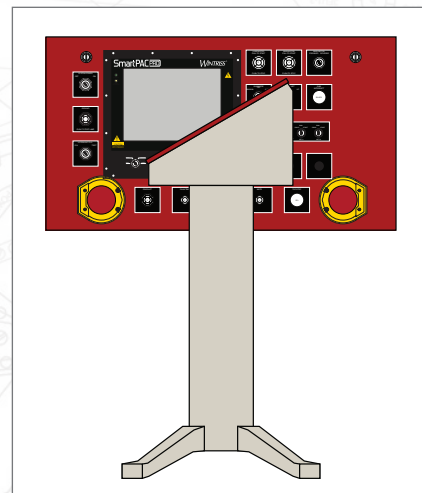


Full Autocad mechanical and electrical drawing packages are provided.

Every application is unique.
Wintriss is ready to review your specifications
and design a solution that is right for you.



Angled face consoles are a popular configuration.
They are available in many sizes to accommodate
all user interfaces.



Space saving console designs.

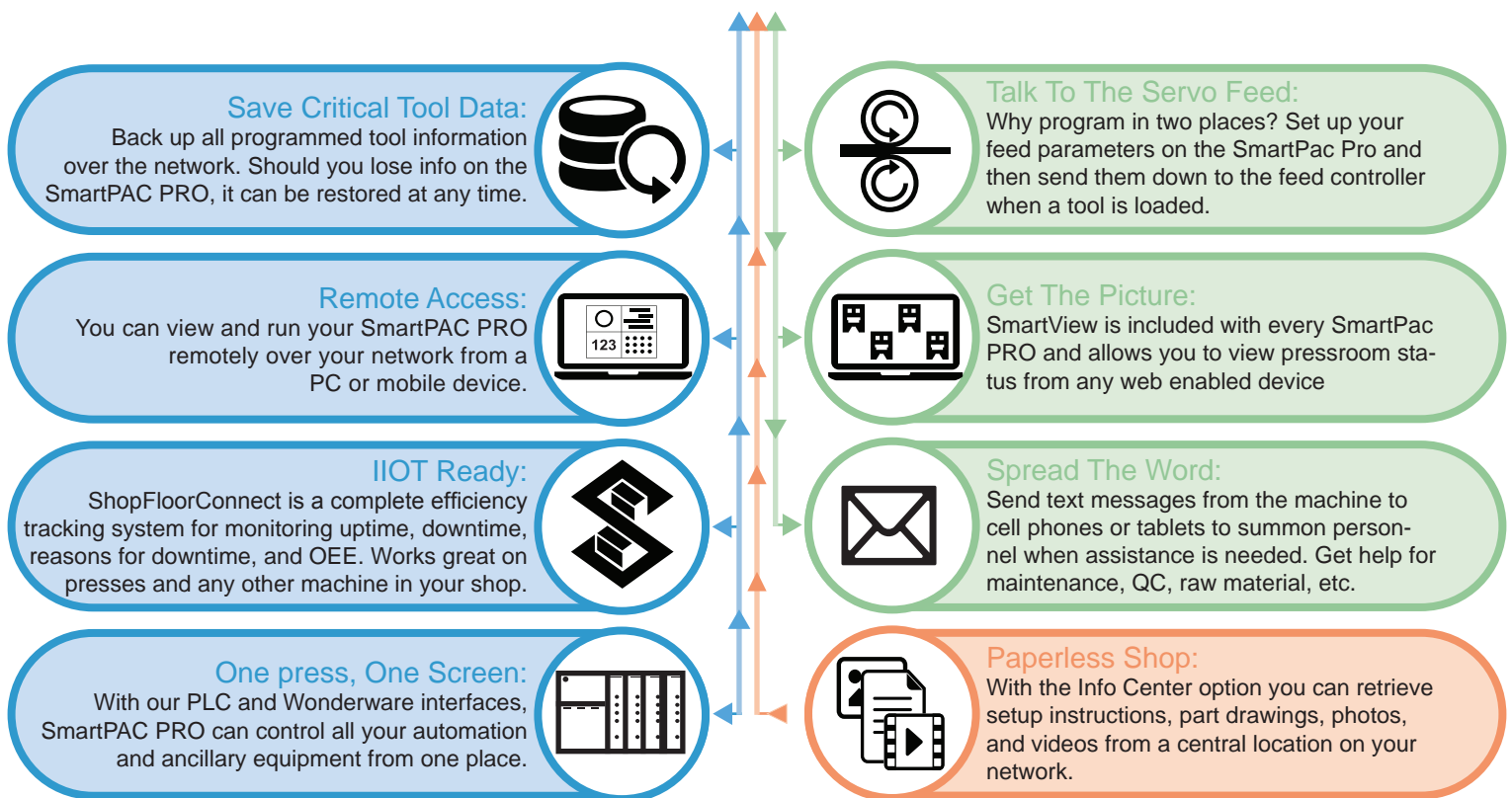


SmartPAC PRO Upgrade:

If you have a previous version of the SmartPAC control, it's easy to upgrade to the PRO. With the modular design of the system, the resolver and all of your modules such as DiProPAC, ProCamPAC, AutoSetPAC, WaveFormPAC, etc. can simply be connected to the PRO and you're up and running.

Wintriss offers special upgrade pricing to our existing SmartPAC customers.

Wintriss SmartPAC PRO - Networking Features



Find Out More

For more information, contact your local Wintriss representative or visit our web site at www.wintriss.com.

Wintriss Controls Group, LLC

100 Discovery Way, Unit 110
Acton, Massachusetts 01720 USA

Toll Free: (800) 586-8324

Web Site: www.wintriss.com

Wintriss Controls is a leading manufacturer of press automation, die protection and safety controls for metal stamping and forming industries; and data collection systems for all discrete manufacturing. We provide seminars for all products and OSHA compliance along with plant surveys. These products, which leverage Wintriss' 70+ years of experience in the metal stamping industry, are known for their proven performance and rugged dependability in the toughest factory environments. Wintriss equipment is backed by attentive service, timely repairs, and comprehensive spares inventories. A toll-free hotline gives customers immediate access to technical support experts for product information and applications assistance.

1139902 Rev B March 2023
© 2023 Wintriss Controls Group, LLC

WINTRISS®