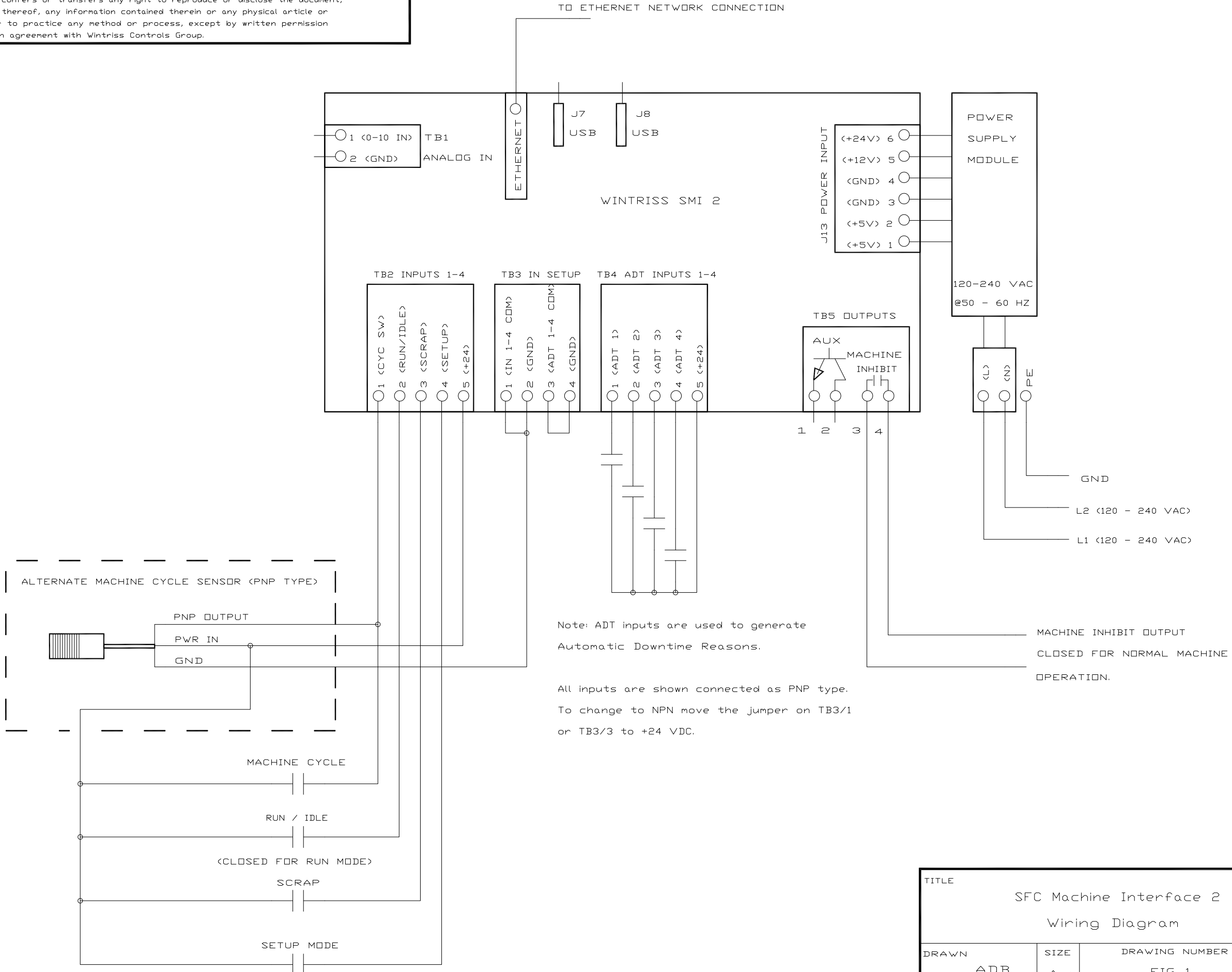


PROPRIETARY RIGHTS. This document discloses subject matter in which Wintriss Controls Group has proprietary rights. Neither receipt nor possession thereof confers or transfers any right to reproduce or disclose the document, any part thereof, any information contained therein or any physical article or device, or to practice any method or process, except by written permission or written agreement with Wintriss Controls Group.



Note: ADT inputs are used to generate Automatic Downtime Reasons.

All inputs are shown connected as PNP type. To change to NPN move the jumper on TB3/1 or TB3/3 to +24 VDC.

MACHINE INHIBIT OUTPUT CLOSED FOR NORMAL MACHINE OPERATION.

TITLE			
SFC Machine Interface 2			
Wiring Diagram			
DRAWN	SIZE	DRAWING NUMBER	REV
ADB	A+	FIG 1	
DATE	7/26/16	SHEET	OF