

Addendum – Info Center and Slideshow Screensaver

Overview

This document explains how to set up and use the Info Center and Slideshow Screensaver option for the SmartPAC PRO. This feature enables SmartPAC PRO users to substitute a user-configurable slide presentation in place of the “blackout” screen when SmartPAC PRO enters the screensaver mode. To use the slideshow feature, the SmartPAC PRO must be equipped with the Info Center option. Follow the steps below to set up the Info Center and slideshow screen saver.

The slideshow itself consists of individual documents of supported file types contained in a directory accessible by the Info Center. The supported file types are:

.JPG (and .JPEG)	.BMP
.GIF	.PNG
.TIFF	

The maximum size for each file should not exceed 10MB.

Table 1-Compatible File Types

Create the Info Center Directory Structure

NOTICE

If you are already using Info Center, skip to the next section - Create the Slideshow-Specific Directory Structure

Before using the Slideshow, you must set up a directory structure on a network server to host the content. To create the directory structure, do the following:

1. Select a server on your network to host the content.
2. Create a “main” directory on the server for the Info Center documents. Make note of the directory name as you will later need to direct the SmartPAC PRO(s) to this location. Any name is acceptable except for “slideshow” (this directory name has significance to the feature and will likely be used elsewhere). In the examples below, we will be using the name “SmartPACInfo”. This directory will store all the Info Center content, and must be shared, with read/write permissions.
3. Build the directory structure. The Info Center’s directory structure is flexible enough to enable you to view press and tool-specific content, but also has a provision to include content available to all presses regardless of which tool is loaded. The trade-off to consider is the time required for file maintenance vs. specificity. For example, you can create “global-only” content that will be the same for every SmartPAC PRO all the time – regardless of which tool is running (this is the easiest to maintain). You can also create tool-specific content that will be displayed whenever the tool is loaded in any press (this is

the most used method). You can also organize the content that is specific to each tool, in each press that can run it. This method is not recommended because it can involve duplicate files and is difficult to maintain. You can also create a mix of global and tool/press specific content.

Global Only (Simplest)

Global-only content will be displayed on all connected SmartPAC PROs regardless of which tool is loaded. It is the simplest to maintain and is best used for items such as company-wide announcements, holiday schedules, and lunchroom menus. Follow these steps to create global-only content:

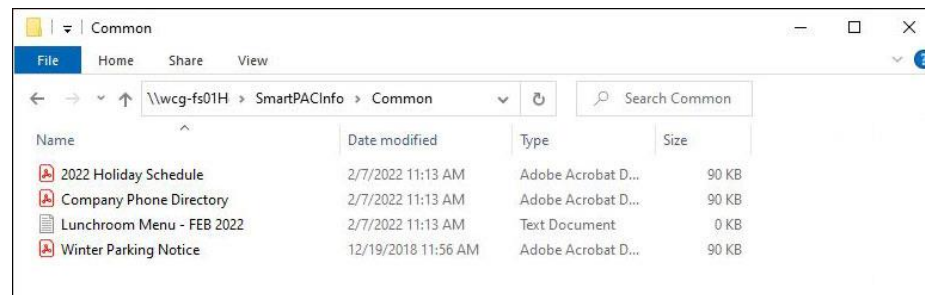


Figure 1. Common (Global) Directory Structure

1. Create a folder named “Common” in the Info Center main directory on the server. In this example, the main directory is named “SmartPACInfo” (see Figure 1).
2. Place the files you wish to display in the Info Center into the Common directory. A screen with links to the documents will appear when INFO CENTER is selected from the SmartPAC PRO’s Run Menu (see Figure 2).

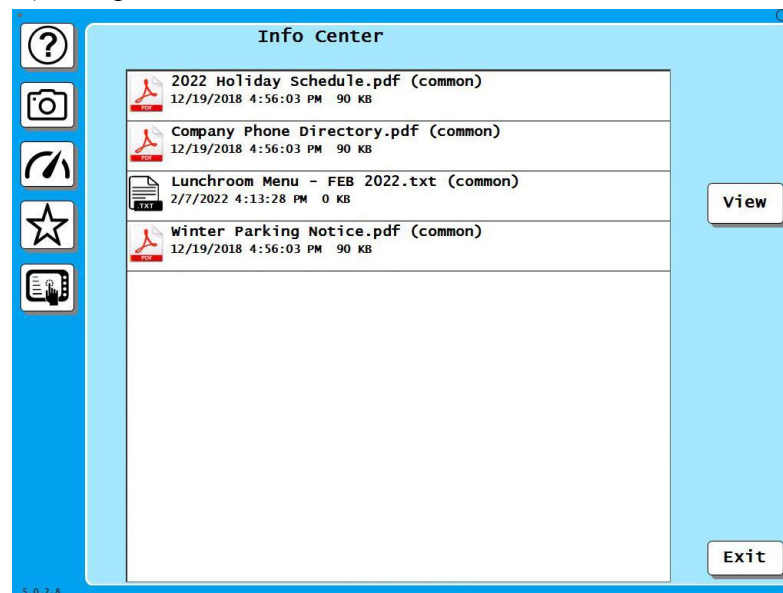


Figure 2. Info Center Screen Showing Common (Global) Files

Tool-Specific

By changing the directory structure and adding files, you can create tool-specific Info Center content. The documents you include for each tool will show up on SmartPAC PRO’s Info Center screen whenever and wherever a tool is loaded – all presses will share the same content. Follow these steps to create tool-specific content:

1. Create folders named for each tool number in the Info Center main directory on the server. In this example, the main directory is named “SmartPACInfo”. Please note that the folder name and the SmartPAC PRO tool number must match (see Figure 3).

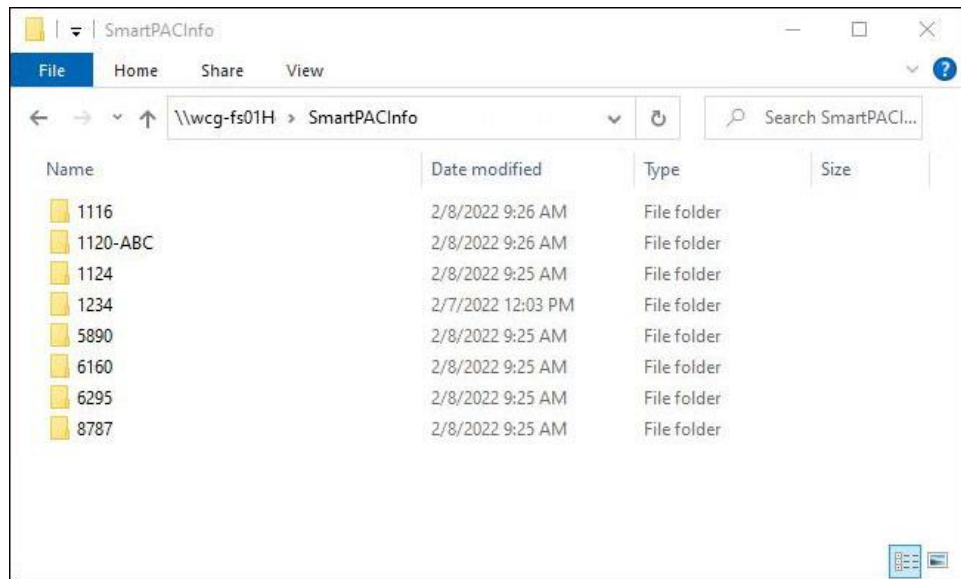


Figure 3. Tool-Specific Directory Structure

2. Place the Info Center files you wish to display for each tool in their respective directories (see Figure 4).

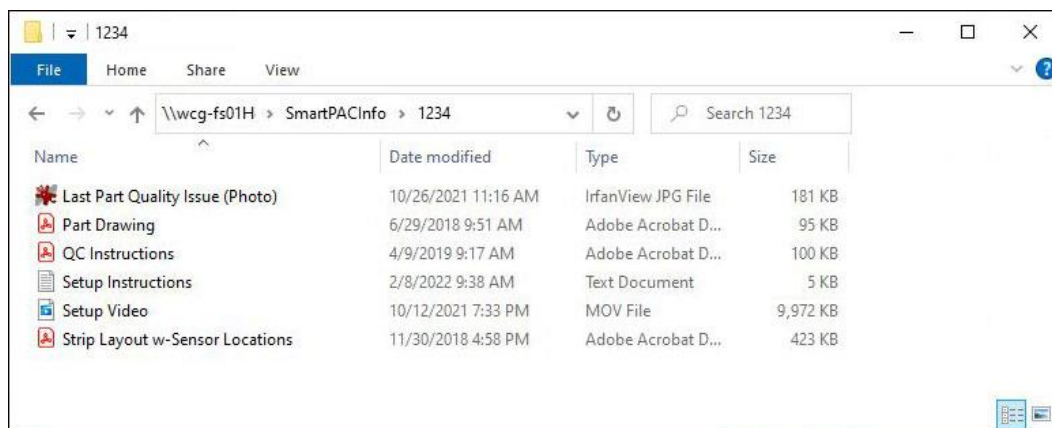


Figure 4. Tool Specific Info Center Content

3. The files in each tool’s directory will display on the SmartPAC PRO’s Info Center screen when that tool is loaded (see Figure 5).

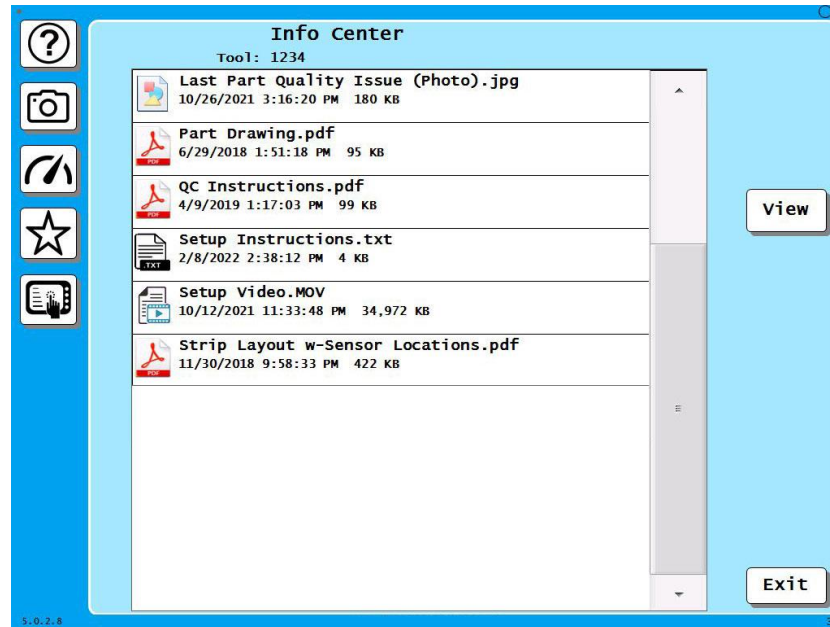


Figure 5. Info Center Screen Showing Tool-Specific Files

Tool-Specific with Global Content

You have the option of displaying both Global and Tool-Specific content in Info Center by simply adding a “Common” directory to the main Info Center Directory (See Figure 6).

The display hierarchy is shown in Figure 8.

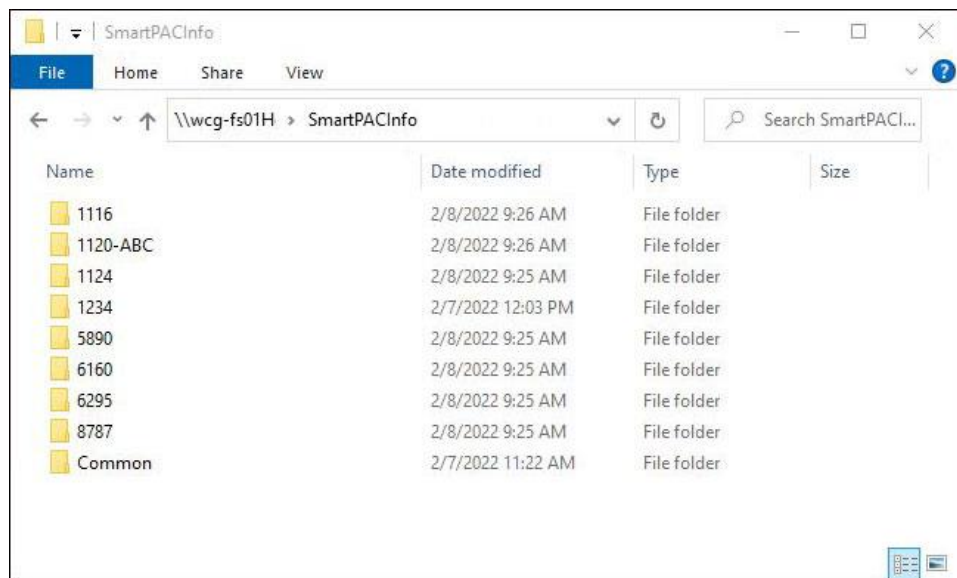


Figure 6. Directory Structure for Combined Global and Tool-Specific Content

When the Info Center is selected from the SmartPAC PRO's Run Menu, both the Global (Common) and the Tool-Specific files will be displayed (see Figure 7).

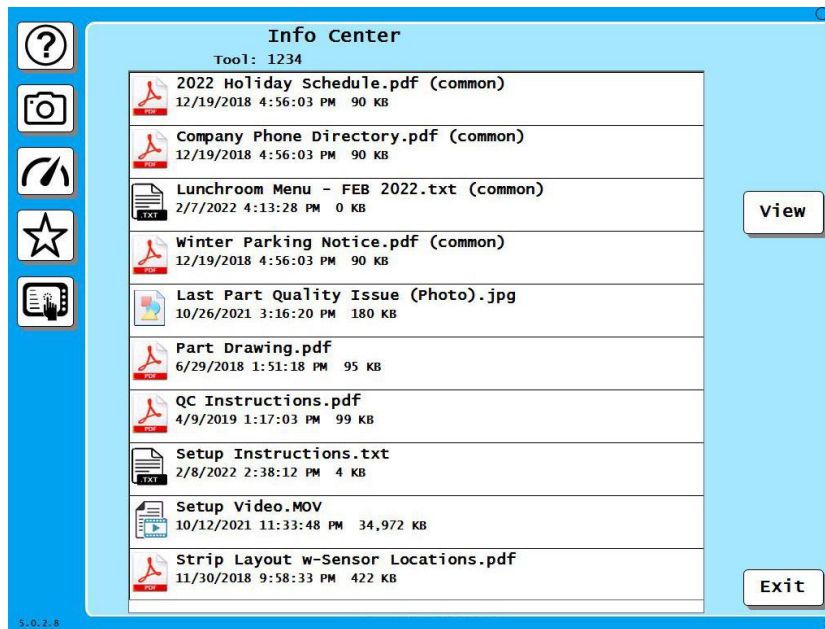


Figure 7. Info Center Screen Showing Both Global (Common) and Tool-Specific Files

Press and Tool-Specific (Not recommended)

The Info Center can also display press and tool specific content. To accomplish this, instead of directing each SmartPAC RPO to a single main directory (we've been using "SmartPACInfo" in our examples), you would create a main directory specific to each press, and then place copies of the Common and Tool-Specific directories inside it. This method is not recommended because it results in many duplicate files. The maintenance with such an arrangement is overly burdensome.

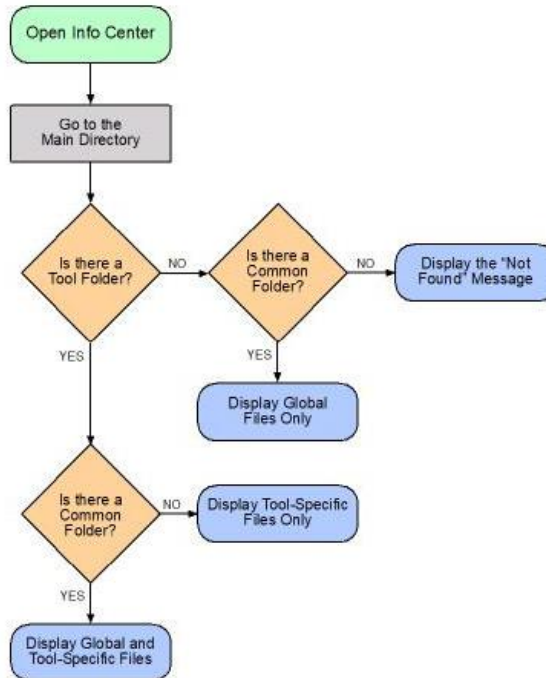


Figure 8. Info Center Display Hierarchy

Create the Slideshow-Specific Directory Structure

The Slideshow feature leverages the Info Center to enable users to replace the “blackout” screen backlight saver with a custom slideshow comprised of individual documents, photos, and/or video (see Table 1-Compatible File Types).

You have the option of creating a “global” slideshow that will display on all presses and all tools, or you can create tool-specific slideshows that will be displayed whenever an Info Center-equipped press runs a particular tool. It is recommended that even if you intend to use tool-specific slideshows, you also create a global version that will automatically be selected if no tool specific slideshow is available.

The slideshow content resides within the Info Center directory structure. Follow the instructions below to set up the slideshows.

Global Slideshow

Global slideshows are displayed on all connected SmartPAC PROs regardless of which tool is loaded. It is the simplest to maintain since there is only one set of files for all the SmartPAC PROs. The global slideshow is also the default slideshow when no tool-specific one is present.

1. Create a folder inside the Info Center main directory named “Slideshow”. In the example in Figure 9, the main directory is named “SmartPACInfo”.

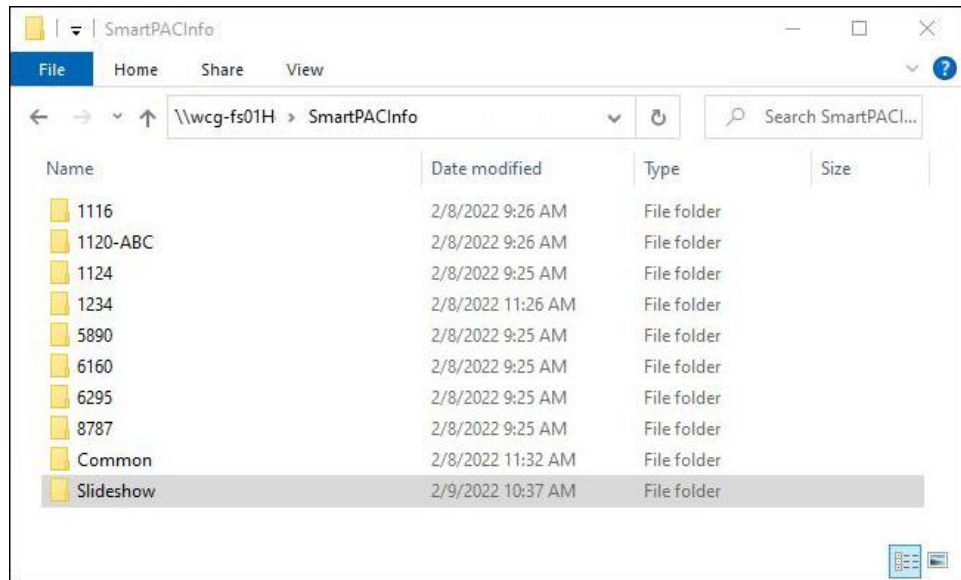


Figure 9. Info Center Main Directory with Global Slideshow Folder

2. Place the slideshow files inside this directory. There is no limit to the number of files you can place into a slide show. The maximum allowable size for each file is 10 MB.

The slides in the show will be displayed in alphabetical order, so if you want them displayed in specific sequence, name them accordingly.

Tool-Specific Slideshows

Tool-specific slideshows can be created if you are using a tool-specific directory structure for Info Center. Follow the instructions below to create tool-specific slideshows.

1. Locate and open the tool folder within your Info Center main directory. In our examples, we have been using “SmartPACInfo” as our main directory and tool number 1234.
2. Create a folder named “Slideshow” inside the tool directory (see Figure 10).
3. Place the slideshow files inside this directory. There is no limit to the number of files you can place into a slide show.

The slides in the show will be displayed in alphabetical order, so if you want them displayed in specific sequence, name them accordingly.

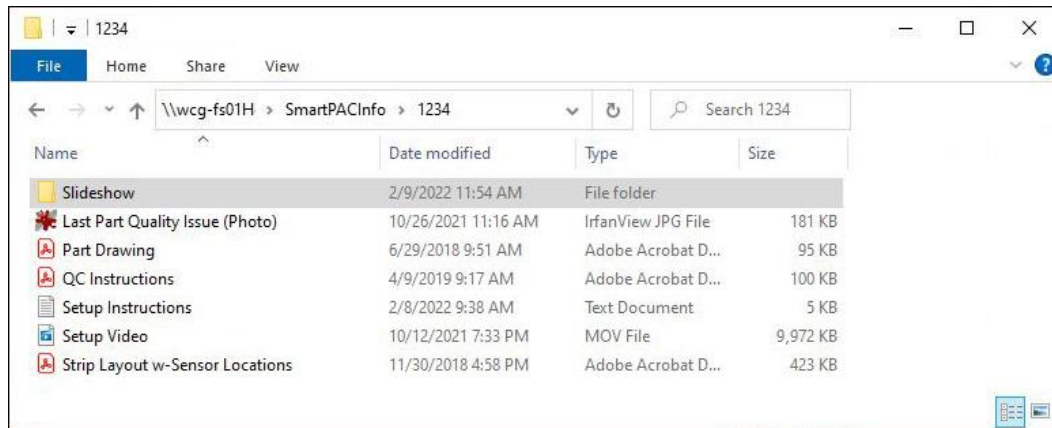


Figure 10. Tool-Specific Slideshow Directory

Slideshow Display Hierarchy

When the slideshow is enabled in the SmartPAC PRO (see Figure 12) and the screen saver times out, the SmartPAC PRO will start the slideshow. First it will go to the Info Center main directory and look for a directory for the currently loaded tool. If found, it will look for a directory named “Slideshow” in the tool directory. If found, it will display the files within that directory in alphabetical order according to the timing set for the slide show.

If no tool directory exists, or if there is no Slideshow directory inside the tool directory, the SmartPAC will look for a Slideshow directory in the main Info Center directory (the “Global” slideshow directory). If found it will display the files within that directory in alphabetical order according to the timing set for the slide show. If no Global directory exists, the screen saver will turn the screen black.

Directing the SmartPAC PRO to the Info Center Content

Once the Info Center (and Slideshow) directory structure is in place, you must set up the SmartPAC PRO to display the correct Info Center and slideshow content. Start by pointing the SmartPAC PRO to the main Info Center directory. In our example, we’ll use the directory “SmartPACInfo” on the sever named “wcg-fs01H”.

1. Turn the PROG/RUN key switch to PROG and press the button labelled INITIALIZATION MENU.
2. Press the NEXT button until you see the menu selection SETUP NETWORK and press the button.
3. Press the INFO CENTER button to display the Info Center Setup screen (Figure 11).

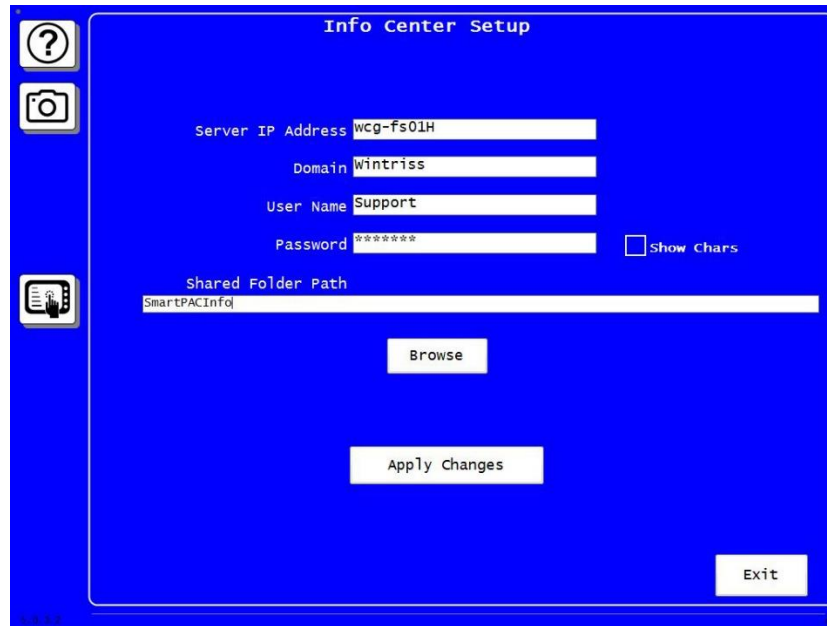


Figure 11. Info Center Setup Screen

4. Enter The server IP address (or server name), as well as the domain and login information for the server.
5. In the Shared Folder Path, enter the path to the main Info Center directory on your server.
6. Press the Apply Changes button.
7. Press the Browse button to verify that the path exists. If the SmartPAC PRO is unable to access the location, verify the server settings and Shared Folder Path.
8. Press Exit when you are done.

Enable the Slideshow Option and Set the Timing

1. Turn the RUN/PROG key switch to PROG and press the INITIALIZATION MENU button.
2. Press the PREFERENCES button on the right side of the screen. The preferences screen will appear (see Figure 12).
3. To enable the slideshow, press the “Backlight Saver Mode” button until “Slideshow” is displayed.

This button will toggle through three choices: “Disabled”, where the screen saver (or slideshow) is turned off, “Blackout” where the screen will go black after a period of inactivity greater than the selected Backlight Saver Time, and “Slideshow” which will launch the slideshow after a period of inactivity greater than the Backlight Saver Time.

4. Press the “Backlight Saver Time button to select the period of inactivity required to enter the blackout mode or launch the slideshow. This button toggles through three choices – one, five, and fifteen minutes of inactivity.

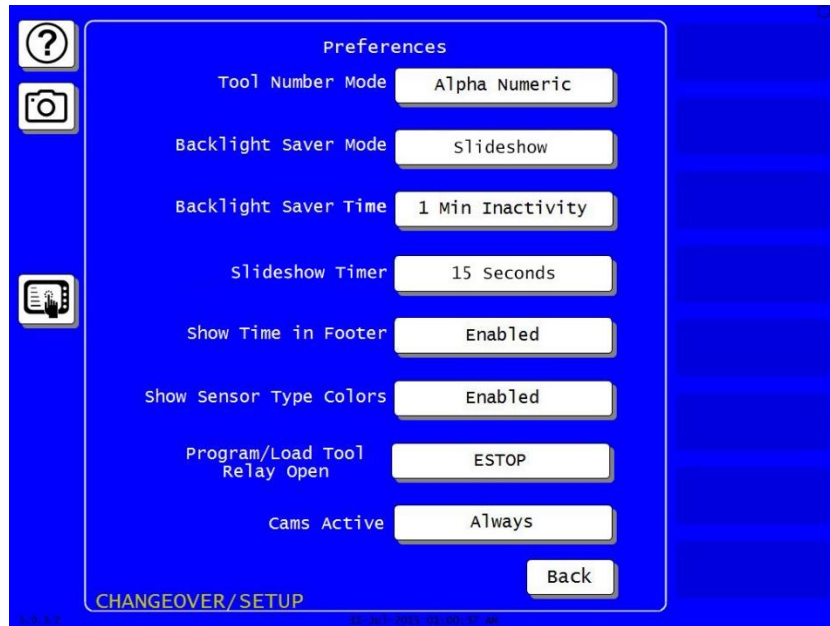


Figure 12. The Preferences Screen

5. Press the “Slideshow Timer” button to select the amount of time each document in the slideshow will be displayed on-screen before switching to the next slide.
This button toggles through four choices: 5, 15, 30, or 60 seconds per slide.
6. Press the “Back” button when you are finished making your selections.

Using the Slideshow On-Screen Controls

When the slideshow is running on the SmartPAC PRO, a menu bar at the top of the screen allows to scroll through the slides, pause the slideshow, or exit the slideshow (see Figure 13). Exiting the slideshow brings up the main run screen. If the SmartPAC PRO is left undisturbed for longer than the screen saver timeout period, the slideshow will restart.

The slideshow will automatically end when the SmartPAC PRO detects and displays any sort of error or status message.

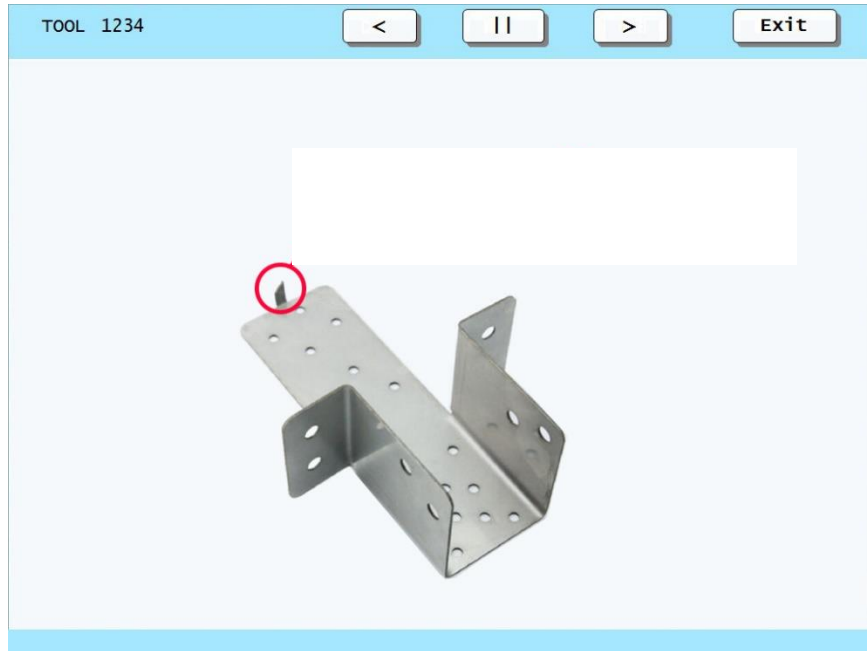


Figure 13. An Active Slideshow Screen Showing the Controls at the Top