

Instruction Sheet – Upgrading from SmartPAC 1 or SmartPAC 2 to SmartPAC PRO

This document shows you how to use SmartPAC Backup and Restore (SBR) and the USB Disk Backup installed Option to copy and transfer tool programs when upgrading a SmartPAC 1 or SmartPAC 2 to a SmartPAC PRO.

The document is organized in the following sections:

- Using SBR to Upgrade from a SmartPAC 1 or 2 to a SmartPAC PRO
- Using USB Disk to Upgrade from a SmartPAC 2 to a SmartPAC PRO

Using SBR to Upgrade From SmartPAC 1 or 2 to SmartPAC PRO

NOTICE

SmartPAC 1 or 2 Initialization settings cannot be restored to SmartPAC PRO. Be sure to copy Initialization settings to a paper form or take photos before the backup so you can enter them manually into SmartPAC PRO after you have restored the tool settings. It is also suggested that any obsolete tools be deleted prior to the backup.

Copy the following settings to a paper form or take photos before the backup:

- Position Sensor (If Installed): Enabled or Disabled
- Counter Setup Mode: Incremented in All Modes or Not Incremented in Inch Mode
- Press Name
- Brake Monitor: Stop and Start Time Limits
- Custom Cam Names
- Auto Advance Settings (If Used)
- Custom Sensor Names
- Sensor Enable Mode: Manual Enable, Auto by Tool, Auto by Sensor
- Setup Mode: Inch or Disabled
- Tool Information
- Security Access: All Settings
- Installed Options (If Applicable): Settings for SFC (Set Communications), PM Monitor, SFI, MultiPAC

You don't need to record settings for AutoSetPAC, WaveFormPAC, ProPAC, or RamPAC (Note: This information is stored at the PAC).

Backing Up and Restoring Tools to SmartPAC PRO using SBR

NOTICE

These instructions assume that the SBR application is installed and operational on a laptop computer with Microsoft Windows 7 or 10. Also the SmartPAC 1 or 2 must have either PACNet RSR, SFC/LETS or 3rd Party Comms as an Installed Option. To order SBR contact your Wintriss REP or Wintriss Customer Service. (SBR P/N 9613202, SBR Cable P/N 4199111)

1. Using SBR, click the Tool Data radio button, then click the Backup All button to start the backup. If the backup has successfully started, the SmartPAC 1 or 2 Icon will have a B with a blue background like the example in Figure 1 below

NOTICE

If an exclamation mark (!) with a yellow background appears and the Backup does not start, some of the likely issues are: COM port setting incorrect, CPU number not set to 1, SBR, PACNet RSR, SFC/LETS or 3rd Party Comms Installed Option not installed on the SmartPAC 1 or 2, or there is an issue with the serial cable. For more information, consult the SBR Instruction Sheet P/N 1137500 or contact your Wintriss Rep or Wintriss Tech Support.

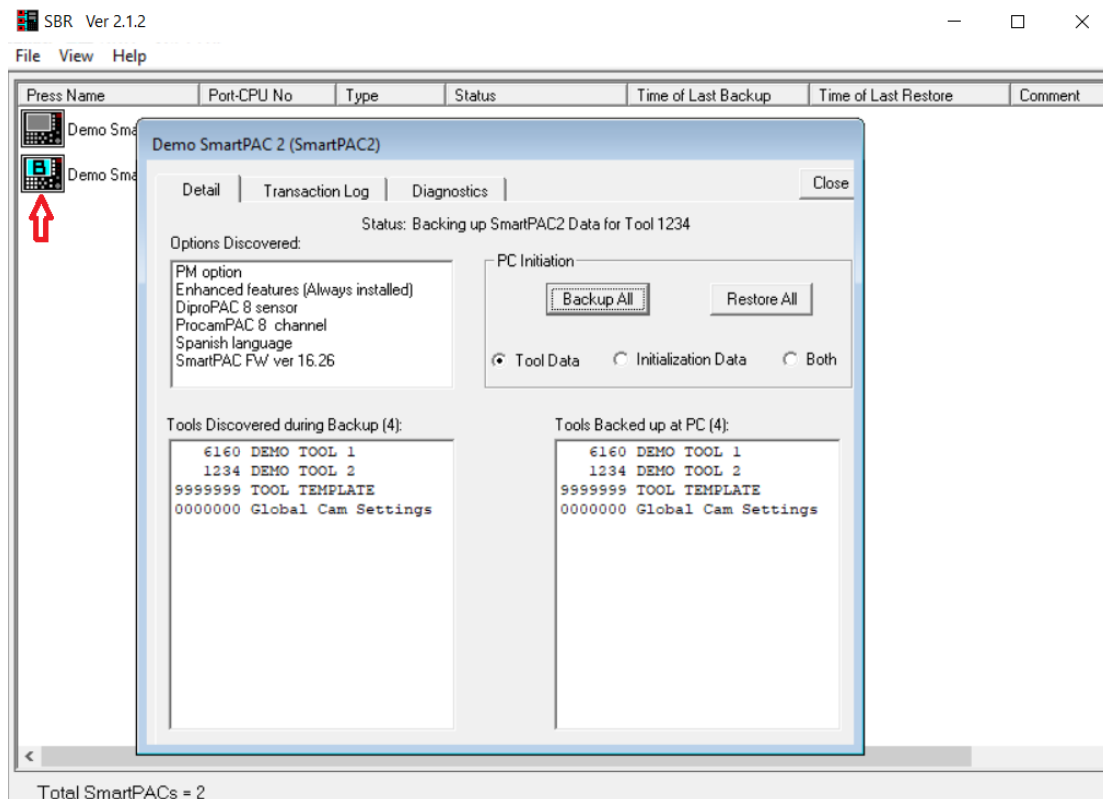


Figure 1 – Tool Data Backup

- When the backup of the Tool Data is complete, the SmartPAC icon window will have a white check mark in it with a gray background and the Status will read, Finished Backup of Tools only.

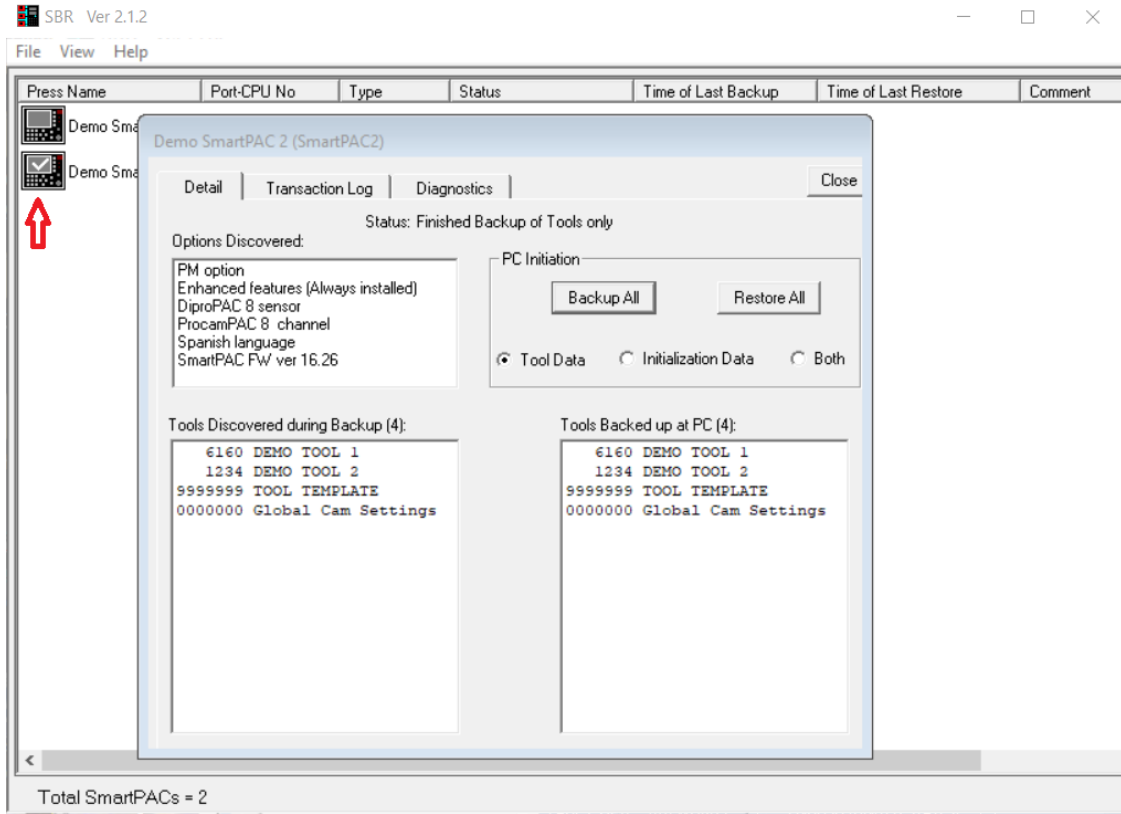


Figure 2 - Tool Data Backup Complete

- Browse to the Tool Storage Path folder on your laptop computer. This is the folder where the Tool Data backup files reside. The default folder name is Wintriss, however you may have named it something more specific. For example, SmartPACBackups (See example in Figure 3 below).

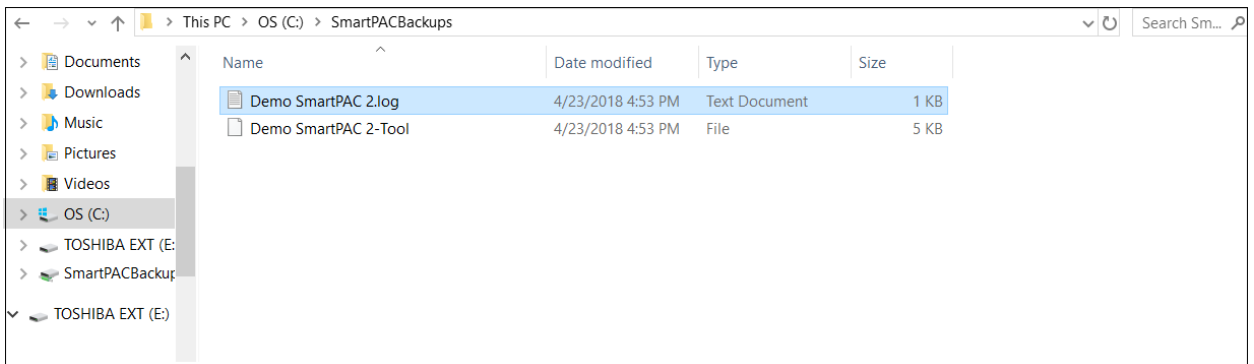


Figure 3 – Tool Data backup files

- Copy or drag these files on to a USB disk. Note, the file names in figure 3 are examples. Your files names will differ according to what you specified for a Press Name in SBR.

Note: For more information about setting up SBR, consult the SBR Instruction Sheet P/N 1137500 or contact your Wintriss Rep or Wintriss Tech Support.

Follow the next steps and figures to restore your SP 1 or 2 tools to the SmartPAC PRO

- Insert the USB disk into the SmartPAC PRO USB connector on the front of the unit. When the “USB disk has been inserted” message pops up, press the Cancel button (Figure 4 below)

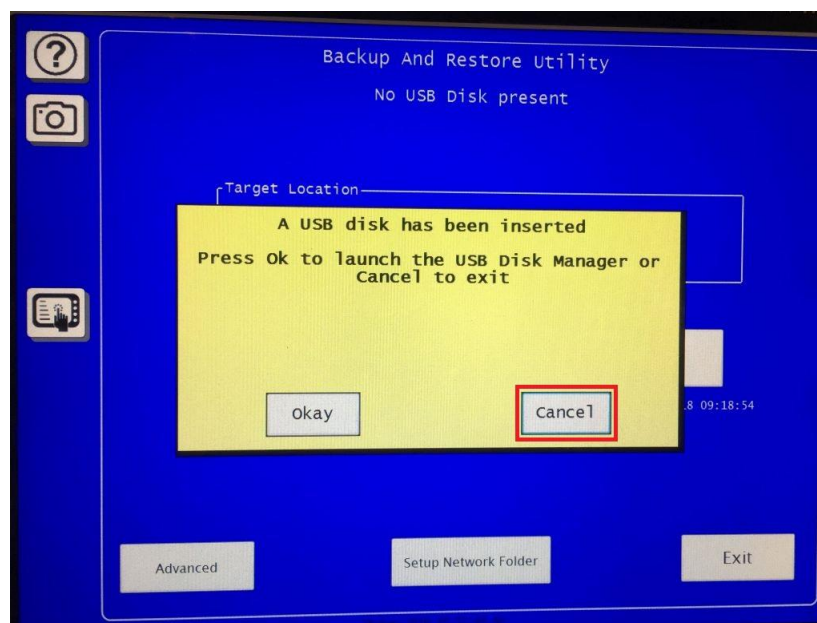


Figure 4 – USB Disk has been inserted message

6. Press the Advanced button (Figure 5 below)

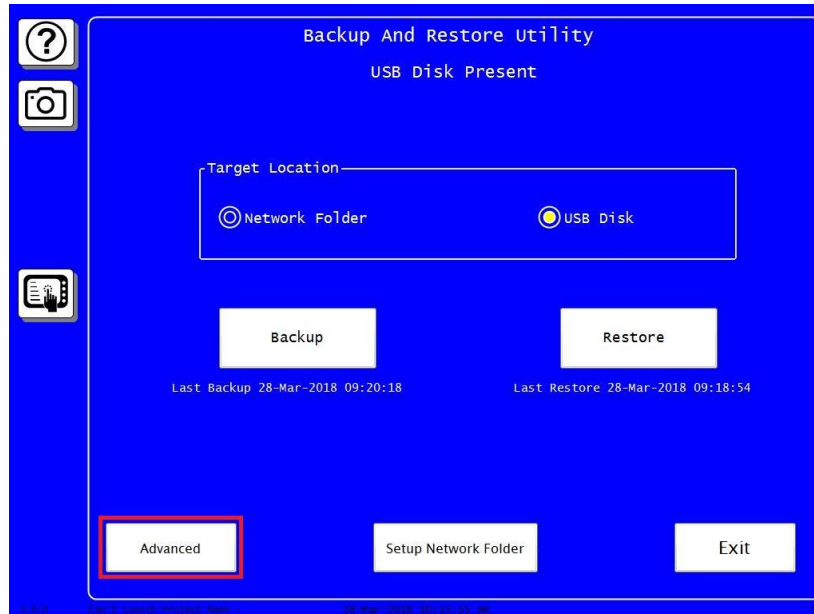


Figure 5 – Backup and Restore Utility Menu Advanced button

7. Press the Restore SmartPAC 1 or 2 Tools button (Figure 6 below)

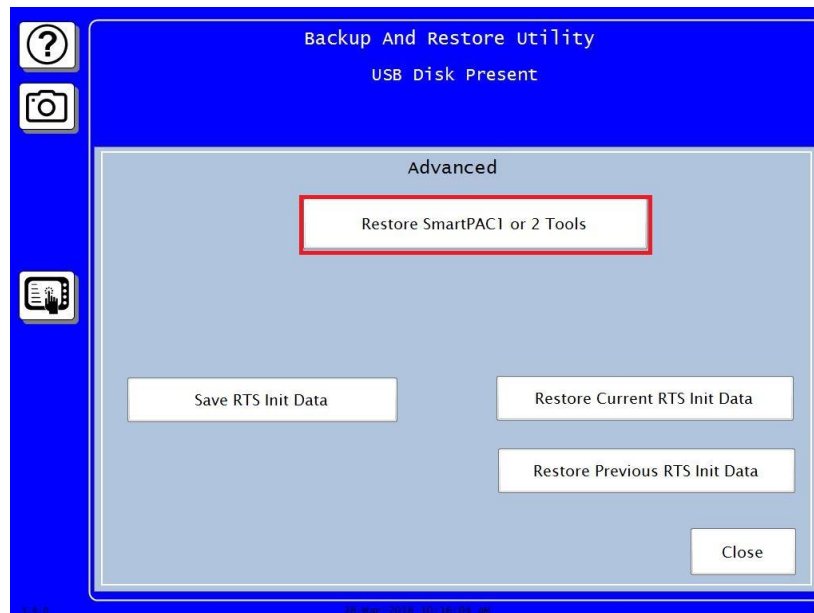


Figure 6 - Backup and Restore Utility Restore SmartPAC 1 or 2 Tools button

8. Press the Search for Tool Files button (Figure 7 below)

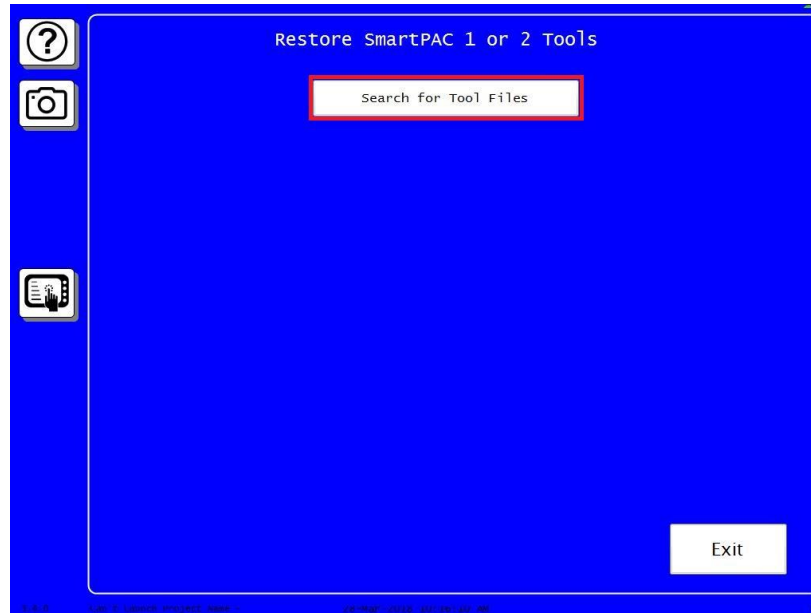


Figure 7 – Search for Tool Files button

9. Press the File name button (Figure 8 below)

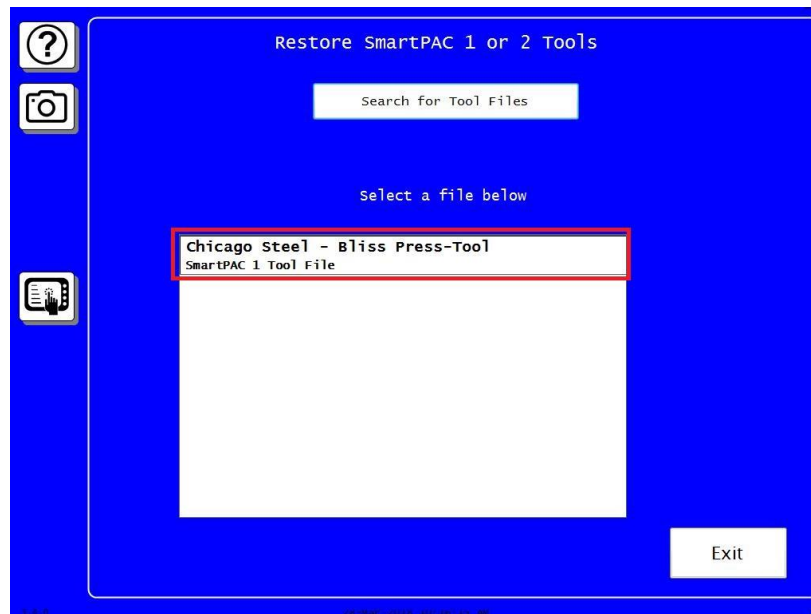


Figure 8 – Select a file below button

10. Tools that are checked will be restored to the SmartPAC PRO or you can uncheck any of the tools you do not want restored then press the Convert to Spro button (Figure 9 below)

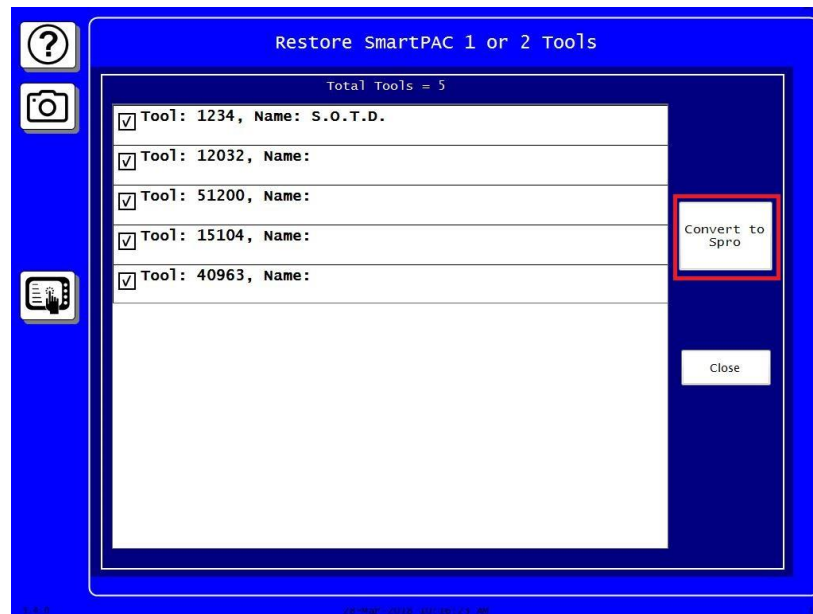


Figure 9 – Convert to Spro button

11. The conversion process and restoring of your tools to the SmartPAC PRO only takes a moment to complete. When you see the Conversion completed! message (Figure 10 below), press the Exit button. Then navigate to the Tool Manager in Program Menu and verify that the tools have been restored.

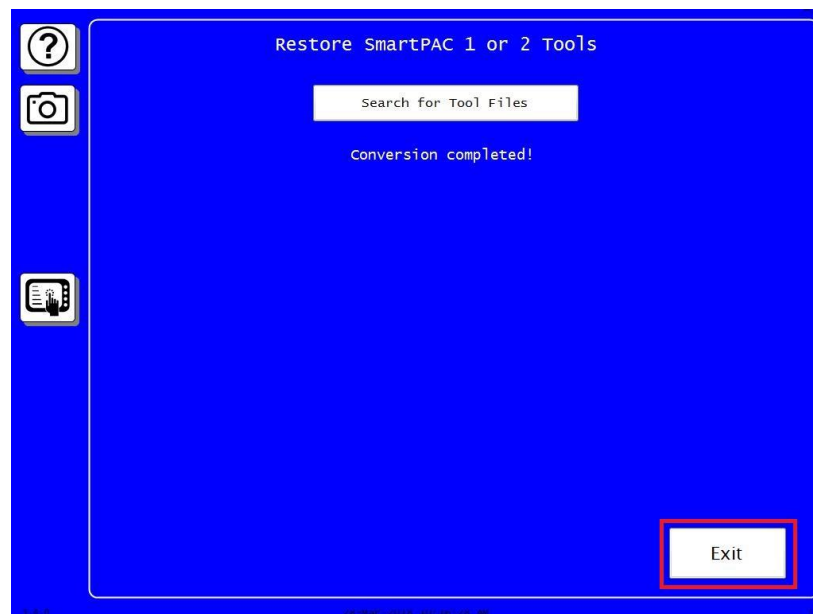


Figure 10 – Conversion completed! message

12. Re-enter all relevant Initialization data that you copied or took photos of into the SmartPAC PRO Initialization Menu. Lastly load a tool and make any adjustments, if necessary, to operate the press.

Using the SmartPAC 2 USB Disk Backup Installed Option to Upgrade from SmartPAC 2 to SmartPAC PRO

NOTICE

These instructions require the SmartPAC 2 firmware to be V10.08 or higher and have the USB Disk Backup as an Installed Option. If your unit does not have this Installed Option contact your Wintriss Rep or Wintriss Customer Service department for upgrade and ordering information (Installed USB Disk Backup - P/N 9679619)

NOTICE

SmartPAC 1 or 2 Initialization settings cannot be restored to SmartPAC PRO. Be sure to copy Initialization settings to a paper form or take photos before the backup so you can enter them manually into SmartPAC PRO after you have restored the tool settings. It is also suggested that any obsolete tools be deleted prior to the backup.

Copy the following settings to a paper form or take photos before the backup:

- Position Sensor (If Installed): Enabled or Disabled
- Counter Setup Mode: Incremented in All Modes or Not Incremented in Inch Mode
- Press Name
- Brake Monitor: Stop and Start Time Limits
- Custom Cam Names
- Auto Advance Settings (If Used)
- Custom Sensor Names
- Sensor Enable Mode: Manual Enable, Auto by Tool, Auto by Sensor
- Setup Mode: Inch or Disabled
- Tool Information
- Security Access: All Settings
- Installed Options (If Applicable): Settings for SFC (Set Communications), PM Monitor, SFI, MultiPAC

You don't need to record settings for AutoSetPAC, WaveFormPAC, ProPAC, or RamPAC (Note: This information is stored at the PAC).

1. Insert a USB disk into the SmartPAC 2 USB connector, then select BACKUP/RESTORE from the MAIN INITIALIZATION MENU (Note: USB disk must be formatted for File System FAT 32)
2. Press the F6 Backup Function Key to initiate the back up.

Repeat steps 5 thru 12 in the above. (i.e., **Follow the next steps and figures to restore your SP 1 or 2 tools to the SmartPAC PRO**)