

Wintriss LETS Machine Interface



AUTOMATE YOUR MANUFACTURING
DATA COLLECTION

**Collect Production Data
from Any Machine**

Honeywell

Wintriss LETS Machine Interface:

The LETS Machine Interface (LMI) is an operator terminal that allows you to collect production data from virtually any machine, and send it to the Honeywell LETS software. The LMI is Ethernet-ready, simply connect it to your network using the built-in RJ-45 (standard Ethernet) connector.

- Quickly connects any machine to LETS
- Ethernet Ready, simply plug it in to your existing network
- User friendly 5.6" color touch screen operator interface
- 32 downtime codes that are fully customizable – both the reasons themselves, and the menu order in which they appear
- “Forced Dialog” mode can inhibit machine restart until a downtime reason has been sent to LETS
- 7-Digit parts counter with preset
- Ability to enter Operator number, Job number, Tool Number, and/or Part number

Specifications:

Input Power:

90-265VAC 47-63 Hz, 1A

Input:

PNP Input for cycle/parts count (required), +24 VDC Maximum

PNP Input for machine running/stopped signal (optional): +24VDC On

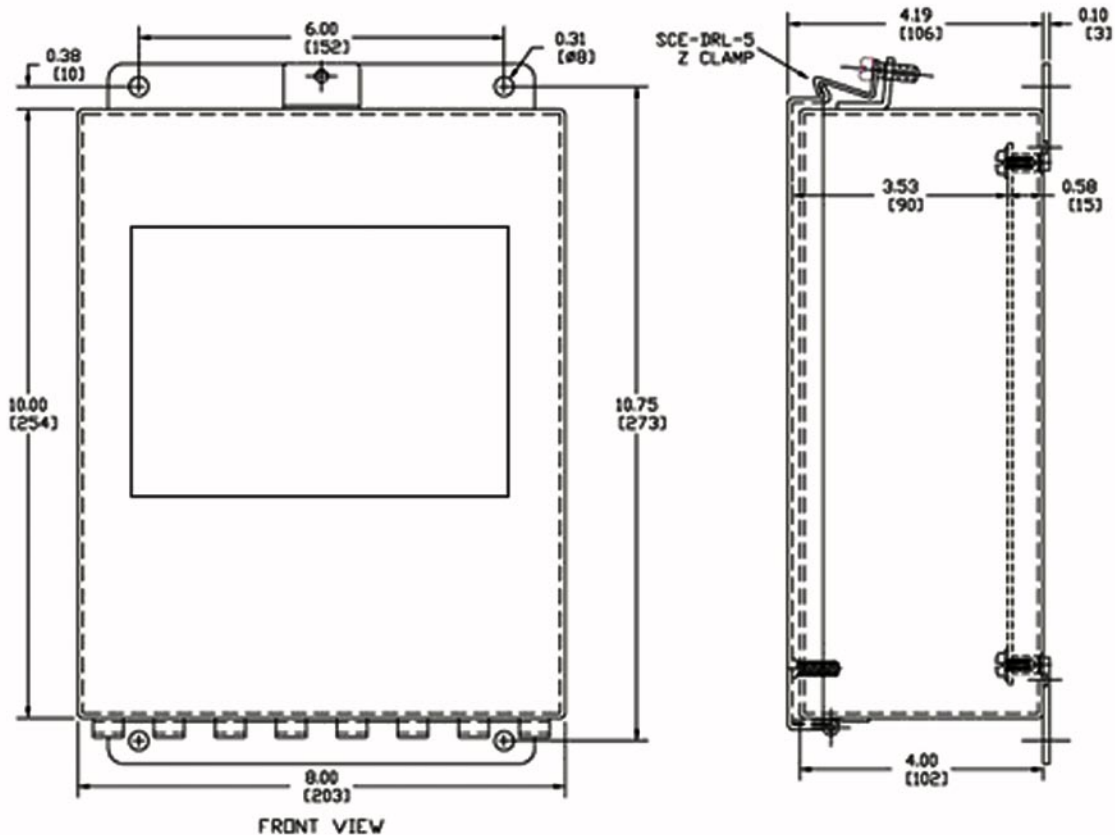
PNP Input for scrap count (optional): +24VDC On

Output:

Stop circuit – Dry Contact – 42VDC, 30VAC, 1 Amp max. Used to stop the machine when the Parts Count preset is reached

Stop circuit – Dry Contact – 42VDC, 30VAC, 1 Amp max. Used to inhibit machine restart until a downtime code is selected

Dimensions:



Automation and Control Solutions

Wintriss Controls Group
100 Discovery Way
Acton, MA 01720
Tel: 800-586-8324 Fax: 978-263-2491
www.wintriss.com

0000000 MCO
April 2007
© 2007 Honeywell International Inc.

Honeywell